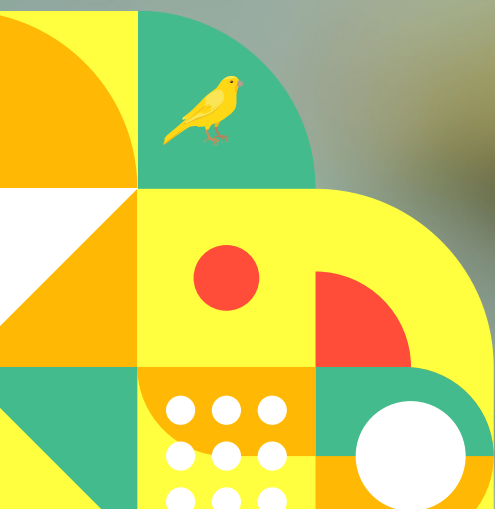


MAY 2024

# SOLIDARITY IN GREEN AND YELLOW: NATIONAL SUPPORT FOR MULTIPLE CHEMICAL SENSITIVITY



 [www.aseq-ehaq.ca](http://www.aseq-ehaq.ca)

 [Office@aseq-ehaq.ca](mailto:Office@aseq-ehaq.ca)



Multiple Chemical Sensitivity (MCS) is a recognized medical disability that is triggered by sensitization due to exposure to chemicals commonly present in products.

# MCS

In Canada, more than 1.1 million people have been diagnosed with MCS, of which 72% are women and nearly 50% are over 55 years old. In Quebec, 251,000 people have been diagnosed with MCS, representing 3.4% of the Quebec population. (Statistics Canada, 2020)

Data from Statistics Canada indicates that the prevalence of MCS has more than doubled between 2000 and 2020. Despite the increase in its prevalence, it is crucial to recognize that MCS is an orphan disease, underscoring its neglected and marginalized status in terms of research and medical care.





## A SPECIAL DAY

### INTERNATIONAL MCS DAY:

**May 12, International MCS Day, holds immense significance as it raises awareness about MCS.**

This observance sheds light on the challenges faced by individuals living with MCS, including stigma, lack of understanding, and limited access to accommodations.

By recognizing MCS on an international scale, we strive to destigmatize the condition, promote understanding, and advocate for greater support and accessibility for those affected. International MCS Day serves as a catalyst for positive change, driving efforts to improve the lives of individuals with MCS and foster a more inclusive and supportive society by creating healthy environments for everyone.



# LIGHTING UP IN GREEN AND YELLOW FOR MCS AWARENESS

We respectfully request your collaboration to illuminate the facade of your structure (building, bridge, etc.) in green and yellow on May 12th, 2024, in support of this cause. These colors symbolize hope and awareness for MCS. The desired color code is green and yellow, the colors of the community movement around MCS. This initiative will not only help raise public awareness about MCS but will also highlight the importance of improving accessibility for all people with disabilities.

Join many cities across Canada like Nanaimo, Edmundston, Fredericton, St. John's, Halifax, Mississauga, Brampton, Kingston, London, and Charlottetown, legislative assemblies of British Columbia, Nova Scotia, and Newfoundland and Labrador, and iconic Canadian landmarks and places like Niagara Falls, the CN Tower, the Peace Bridge, and BC Place Stadium.

